



## 25 Winifred Street Condell Park NSW

5 2 4

Positioned in a quiet and convenient pocket of Condell Park, this well-maintained residence offers exceptional space, flexibility, and functionality ideal for large families, multi generational living, or those seeking additional income potential.

Filled with natural light and thoughtfully designed, the home features multiple living zones, a full sized main kitchen, and an additional secondary kitchen/dining area perfect for extended family or separate living arrangements.

The Highlights:

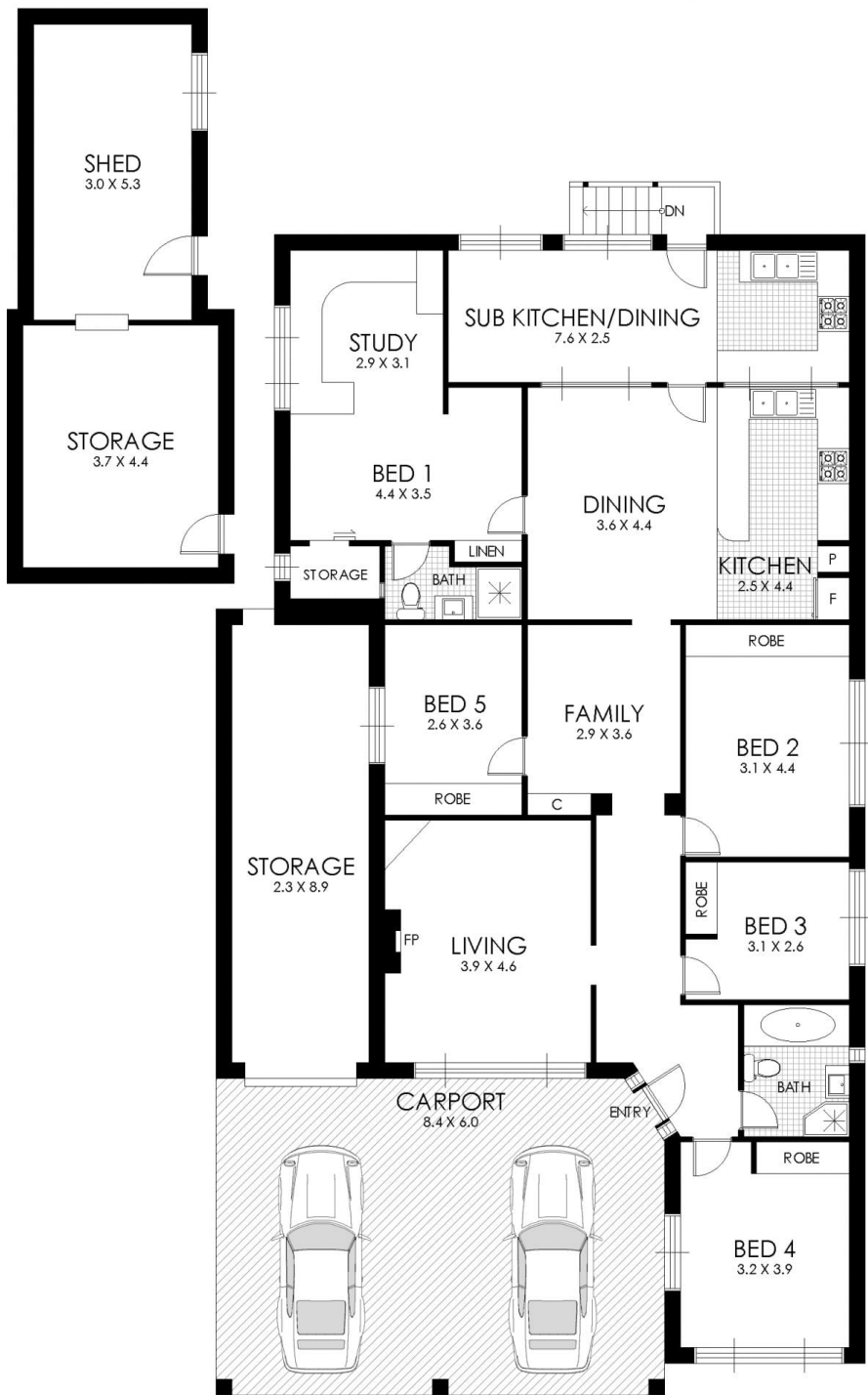
- Generous land size 613.4 Sqm with scope to add a granny flat (STCA). Ideal for extended family, additional

[For full version visit the website](https://www.weltonrealty.com.au)

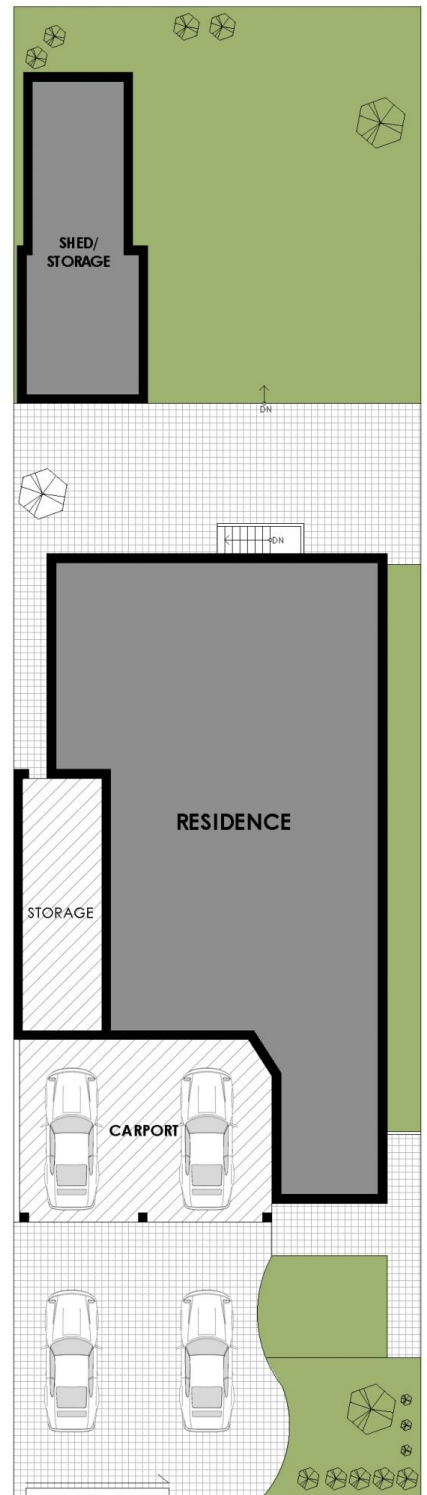
**Type** : House  
**Price** : Auction Unless Sold Prior  
**Land Size** : 613.4 sqm  
**View** : <https://www.weltonrealty.com.au/sale/nsw/c/anteburybankstown/condell-park/residential/house/8690265>



**Iris Ngo**  
0491 831 318



FLOOR PLAN



SITE PLAN



## 25 Winifred Street, Condell Park

**WARNING: DISCLAIMER** This information is not to be relied upon. It is strictly used for marketing and illustration purposes only. All measurements are approximate. Not to scale. No liability accepted. You must rely on your own inquiries and seek advice from your solicitor. Floor plan by [cnkplan@cnkplan.com.au](mailto:cnkplan@cnkplan.com.au) / [www.cnkplan.com.au](http://www.cnkplan.com.au)